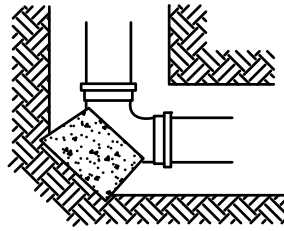
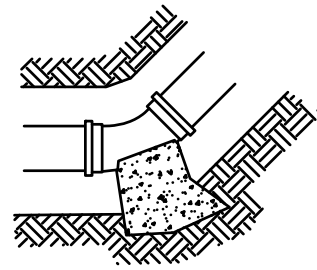


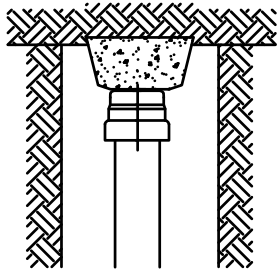
TEE



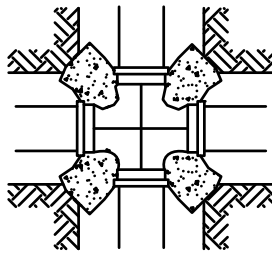
90° BEND



45°, 22½°, AND 11¼° BENDS



DEAD END

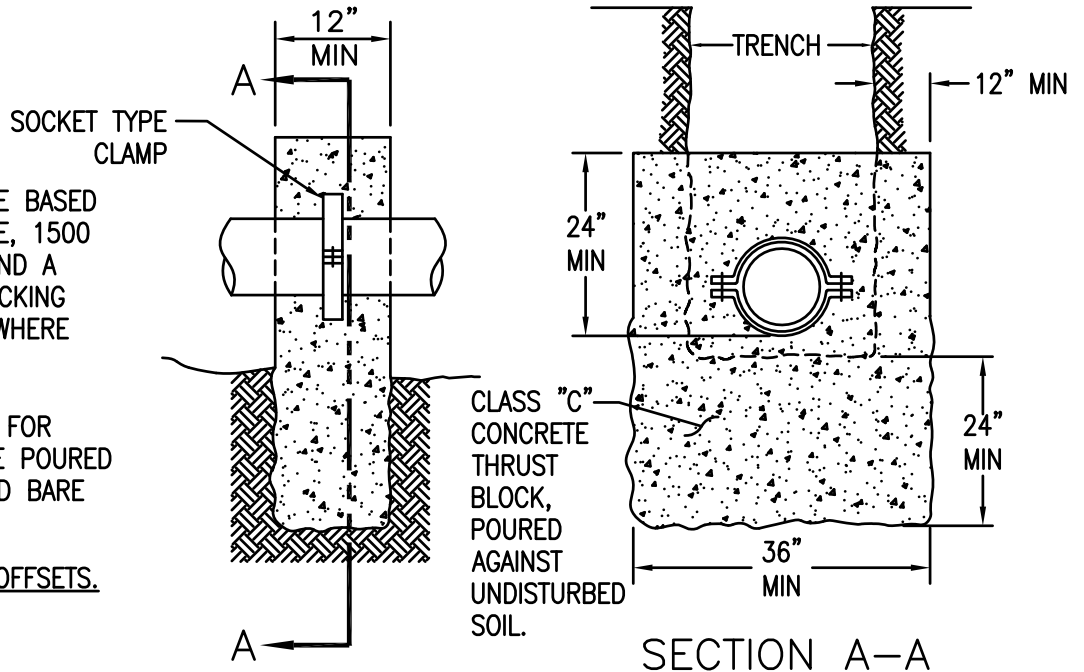


CROSS

MINIMUM REQUIRED TOTAL BEARING AREAS IN SQ. FT.			
TYPE OF FITTING	MAIN SIZE		
	4"	6"	8"
DEAD END	2	4	6
CROSS OR TEE	2	4	6
90° BEND	3	5	9
45° BEND	1.5	3	5
22-1/2° BEND	1	1.5	3
11-1/4° BEND	1	1	1.5

NOTES

1. BEARING AREAS SHOWN ARE BASED ON 150 PSI SERVICE PRESSURE, 1500 PSF SOIL BEARING CAPACITY, AND A SAFETY FACTOR OF 1.25. BLOCKING AREAS NEED TO BE MODIFIED WHERE FIELD CONDITIONS DIFFER.
2. USE CLASS "C" CONCRETE FOR BLOCKING. CONCRETE SHALL BE POURED AGAINST UNDISTURBED SOIL AND BARE PIPE.
3. SEE RW-3 FOR VERTICAL OFFSETS.



WINGWALL DETAIL FOR BLOW-OFFS, VERTICAL, AND HORIZONTAL OFFSETS

NAPA SANITATION DISTRICT



TITLE

CONCRETE THRUST
BLOCKS FOR
HORIZONTAL BENDS

DATE: JAN 2016

CHECKED BY: AD

APPROVED BY: TH

SCALE: NONE

DRAWING NO.

RW-2