



making changes to your plumbing?

If your building/remodel/addition plans include changes to your plumbing, you may need a permit from the Napa Sanitation District.

How do you know if you need a permit?

First, determine if you're in the Napa Sanitation District (NSD) service area. If your project is in the City of Napa, you're an NSD customer. See the map on the reverse side to see other areas included in our service area.

Next, does your project include:

- Construction of a new building?
- Changes to the plumbing outside of the building foundation?
- Adding or removing plumbing fixtures in a commercial building?
- Creating a new tenant space in a commercial building?

If the answer to any of these questions is yes, NSD needs to approve your plans for plumbing changes. In some cases, these changes can raise or lower your Sewer Service Charge.

If you DO need an NSD permit...

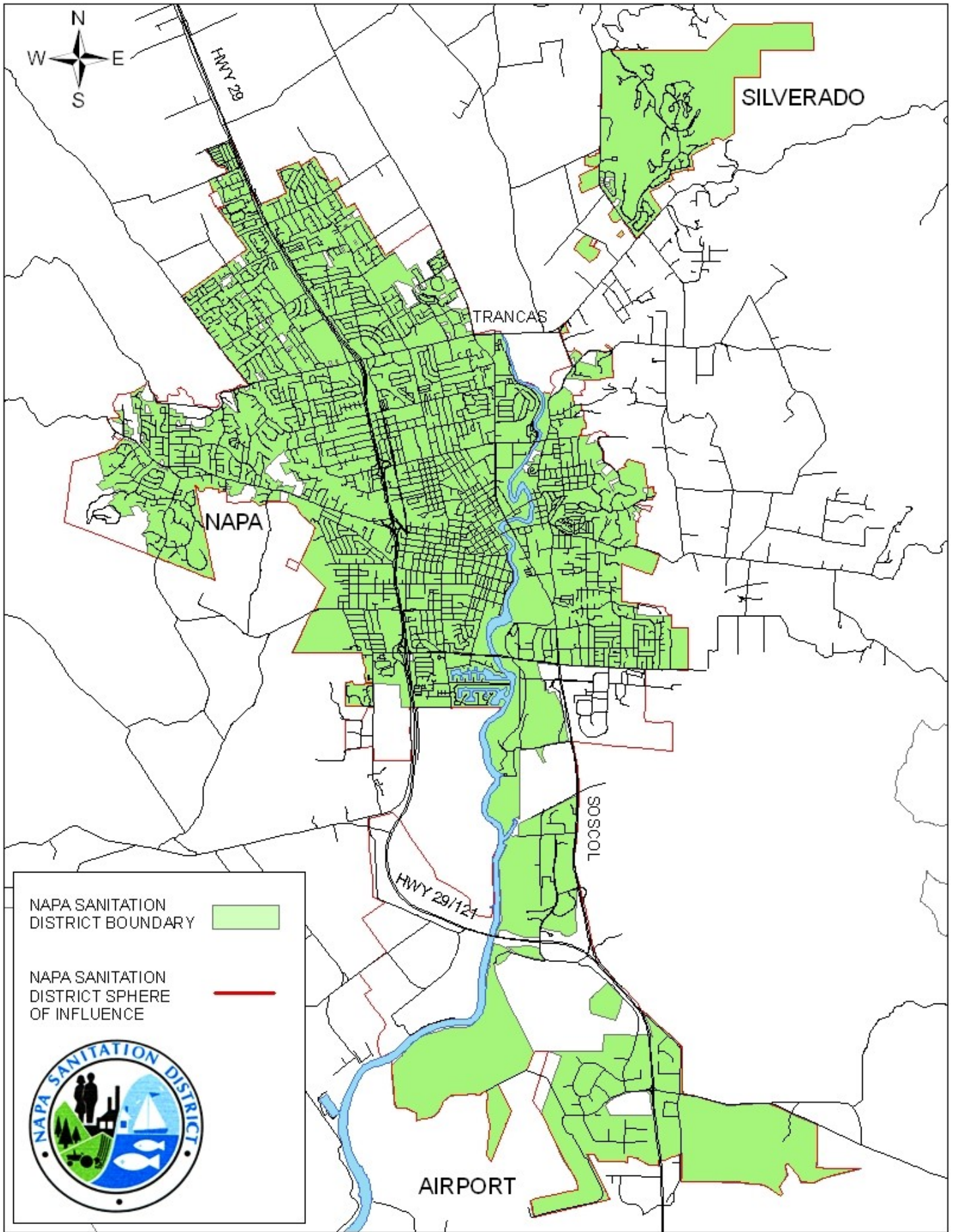
You will need to supply the District with a copy of the same development designs that you provided to the city or county building department. A Napa Sanitation District Engineer can help you with this—just call (707) 258-6000.

Still not sure if you need an NSD permit?

Contact the Napa Sanitation District at (707) 258-6000, Monday through Friday from 8:00 a.m. to 4:30 p.m., and ask for the Engineering Department. Our staff can quickly assess your situation and let you know what steps to follow if you need a permit.

Napa Sanitation District
Clean water. Healthy community.
707.258.6000
www.NapaSanitationDistrict.com





HWY 29

SILVERADO

TRANCAS

NAPA

TOSCOL

HWY 29/124

AIRPORT

NAPA SANITATION DISTRICT BOUNDARY

NAPA SANITATION DISTRICT SPHERE OF INFLUENCE

